

NVee Pro



Premium sub ohm mod and tank User Manual

Safety advice

This product is not recommended for use by:

- Young people under the age of 18 years
- Non-smokers
- Pregnant or breastfeeding women
- Persons with general ill health such as high blood pressure, cardiovascular conditions, diabetes, asthma, lung disease, hyperthyroidism, liver or kidney problems, stomach or intestinal ulcers or tumours of the adrenal glands
- Persons who have a sensitivity/allergy to nicotine or any of the other e-liquid ingredients.

Possible adverse effects

Immediately stop use of this product and seek medical advice if you experience any of the following:

- Feeling faint
- Nausea/vomiting
- Headache
- Dizziness
- Stomach discomfort
- Coughing or irritation to the mouth/throat
- Nasal congestion
- Chest palpitations/development of an irregular heartbeat
- Allergic reaction such as rash, itching or swelling
- Any other unusual or adverse effect.

If medical advice is needed, have product container and label to hand.

Caution

Do not swallow any e-liquid substances.

Nicotine is a toxic substance when inhaled, ingested or in contact with skin. If contact with skin is made, wash immediately.

Nicotine warning applies when the product is used as designed and filled with nicotine-containing e-liquid. Keep out of reach of children. Please dispose of this product responsibly by following your local authority electronic waste disposal guidelines.

Looking after your sub ohm parts

Store in a cool, dry place.

Do not leave, charge or store the device in damp environments, in direct sunlight or in extreme temperatures. Never submerge any of the kit in water or any other liquid. Do not use the device when temperatures are outside the range -10-60 C or 50-140 F.

Do not attempt to repair the product yourself as damage or personal injury may occur. Do not use this product or its parts for any purpose other than vaping.

Avoid using any parts that are damaged or cracked. Do not use with incompatible parts, e-liquids or accessories. Avoid carrying in pockets or bags with other metal objects such as keys and coins.

Avoid placing the battery near flammable items such as carpets, curtains, etc., whilst charging. Do not leave the mod unattended whilst charging and avoid leaving on charge overnight. If the kit becomes very hot or emits a strange smell during charging, remove it from charge immediately and do not attempt to use it again.

Specifications

MOD

1300mAh Li-Ion	58.0*37.5*24.0mm
30W/40W/50W	≤2.0hrs
Black	

TANK

2.0ml (Max)	19*53mm
30 W-50 W	Black
-129A, 0.25Ω Kanthal	Tip diameter 12.5mm



How to use your kit

Power On/Off

Press Fire button 5 times in 2 seconds.

Vaping

Open the airflow controller, adjusting to your preference.

Press and hold the Fire button to vape.

To select the next wattage setting

Press the Fire button 3 times.

Close the airflow controller when not vaping.

Charging the kit

The 3 lights will flash 3 times when the device needs to be charged, it will take 1.5 hours to charge. When fully charged, all three lights will light up and you can remove it from the charger cable to use your kit again.



50W

40W

30W



Plug the USB cable into a power supply and into the USB port to charge.

Protection

The kit will automatically switch off after 10 minutes when left unused, for your safety.



Short Circuit Protection



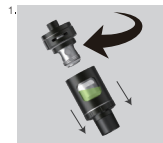
Low Voltage Protection



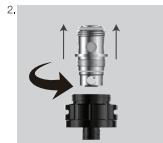
Over Vaping Protection

Protection provided by the product may be impaired if not used in the manner specified by the manufacturer.

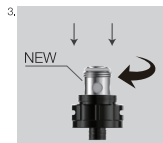
How to change the coil



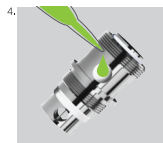
Turn the tank anticlockwise to unscrew it from the base to expose the coil inside.



Unscrew the coil from the airflow controller by turning it anticlockwise.



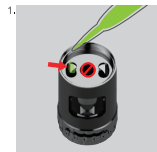
Replace with a new coil.



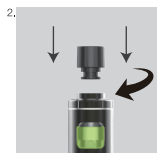
Pour at least 5 drops of e-liquid into each of the coil cotton holes. Screw the tank back on. Wait 3 minutes before filling the tank with e-liquid.

The coils should be changed regularly in line with frequency of use or if you notice a deterioration in taste/quality of the vapour from your device.

How to fill with e-liquid



Unscrew the tank lid anticlockwise. Pour the e-liquid into one of the holes on either side, at a 45 degree angle; avoid the centre hole. Fill to the maximum level. You should re-fill your tank as necessary to ensure that the coil cotton holes are submerged.



Screw the lid back on and ensure the tank is placed back onto the mod before vaping.



Tank opening width.

Cleaning the kit



NVee Pro
nvee.co.uk

Distributed by
Galaxy Connect Ltd. Unit 7 Apollo Park,
Apollo, Lichfield Road Ind. Est.
Tamworth B79 7TA

For all product queries and any returns,
please call Customer Services
on 0800 731 1178 for assistance.



Designed by Vaptoio
Made in China